

OLIVER BONAS

OLINA PAINTED FURNITURE

We hope you love your purchase, however if you aren't completely happy please retain your packaging to ensure its safe return.

MANGO WOOD, MDF, and GLASS MIRROR

Each piece has been individually handcrafted and hand painted by artisans to create a unique piece of furniture. Variations will occur adding charm and beauty.

GLASS MIRROR

Safety backed, handle with care.

CARING FOR YOUR FURNITURE

To help maintain the natural beauty and performance of your piece of furniture do not position in front of radiators, avoid direct heat, direct sunlight, moist environments, and outdoor use.

Levellers have been fitted to each leg, adjust if needed by gently turning.
Shelves are fixed in place. Doors are fitted with magnetic catches.

WARNING!

The beautiful floral patten has been hand painted, avoid using furniture polish, furniture wax and oils as these may mark the surface. Do not use abrasive cleaners on the mirrored glass as this may damage the artwork. Any spills should be removed immediately. Never let them dry out on the surface. To maintain the appearance of your furniture, we suggest regular dusting with a soft cloth and to always use a coaster to protect the surface.

Take care when moving the furniture.

Close doors with care to avoid damaging the glass.

Do not drag furniture as it may cause damage to the joints.

Do not sit or stand on the furniture.

Please note, the above are guidelines only.

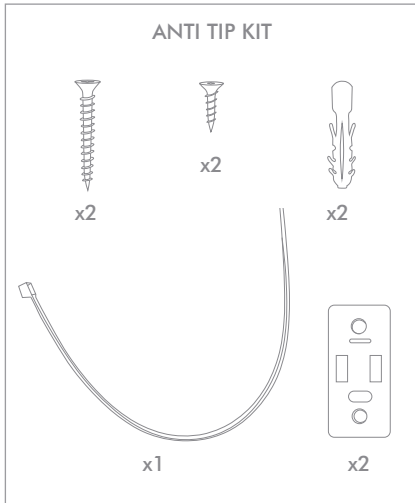
Not recommended for children, bathrooms or outdoor use.

Domestic use only.

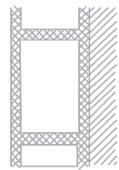
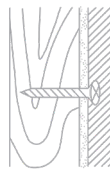
Please retain this information for future reference.

OLIVER BONAS

ANTI TIP KIT

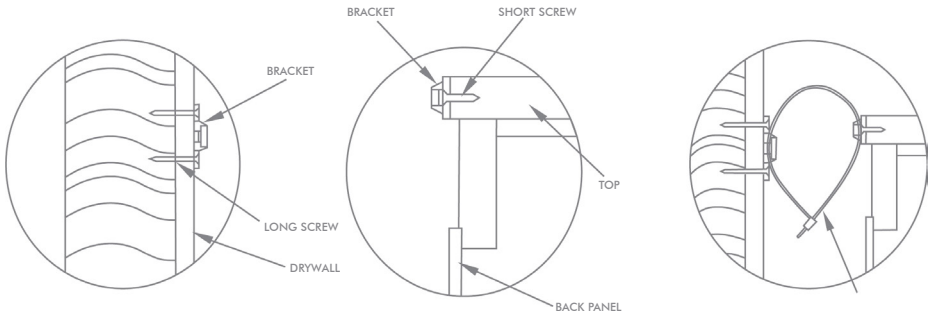


For in children's rooms please use the anti tip kit provided for safety. Please ensure the correct fittings are used for the chosen wall substrate:



(Special fittings needed)

ASSEMBLY



1. Mark the location of the hole on the wall using bracket approx 1" below the top of furniture. Pre-drill the holes at marked location & insert wall plug. Align bracket onto wall plug & secure using long screws.

2. Move the furniture to its final position against the wall and mark the location of the wall bracket on the back of the furniture. The bracket that attaches to the furniture must go into the solid wood piece at the top, not into the thinner back panel. Move the furniture away from the wall and place a bracket on the mark. Mark and drill holes for the screws using a 3/32 drill bit. Attach the bracket to the furniture using the short screws.

3. Move the furniture to its final position and align the bracket on the furniture with the bracket on the wall. Thread the strap through the bracket as shown, and tighten until snug. Do not over-tighten.

IMPORTANT

Check that the wall bracket is firmly screwed into the stud, the furniture bracket is firmly attached to the frame, and the strap is snug.